



Douglas Electrical Components

D-SUB HERMETIC CONNECTOR FEEDTHROUGH



PLUG-AND-PLAY DESIGN WITH REVERSIBLE MOUNTING

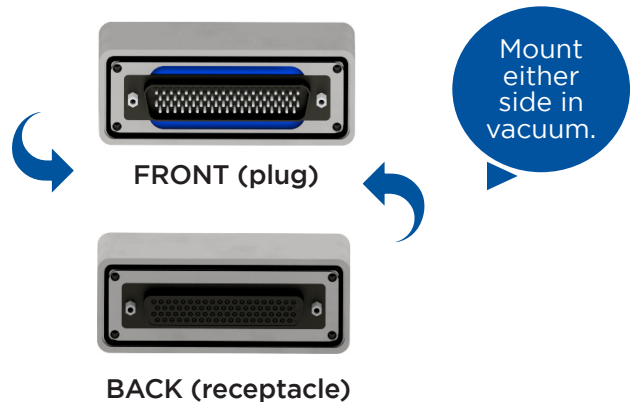
FEATURES

- Plug-and-play with two connectors in a hermetic package
- Hermetically sealed and 100% tested
- Reversible design to increase mounting options

APPLICATIONS

- Vacuum systems
- Test stands
- Mil/Aero

D-SUB HERMETIC CONNECTOR FEEDTHROUGHS



The D-sub connector remains an industry standard in the hermetics space for a variety of applications. Douglas Electrical Components manufactures a standard product line of hermetic D-sub connector feedthroughs for a variety of applications. These feedthroughs create a plug-and-play electrical connection for vacuum systems. With D-sub connectors on both sides of the feedthrough, engineers and system integrators save time and effort, eliminating the need for soldering miniature connector wires or solder cups.

Manufactured with a stainless-steel or aluminum housing, our hermetic D-sub connector feedthrough line seals with a standard Viton+ O-ring; the housing is designed with O-ring grooves on either side of the housing to be **fully reversible** and simplify installation. The feedthrough is designed with electroless nickel plated aluminum shell connectors. The connectors are pinned straight through the housing, such that Pin 1 on the vacuum connector is fed to Socket 1 on the atmospheric side. Standard leak rate is $< 1 \times 10^{-8}$ cc He/sec with higher performance available. All standard D-sub pin counts and connectors are available.

OF POSITIONS

9	15	25	26
37	44	50	62
	78	104	

QUALITY

- ISO9001 / 140001
- RoHS / REACH compliant
- $< 1 \times 10^{-9}$ cc He/sec, standard

LEAD TIME

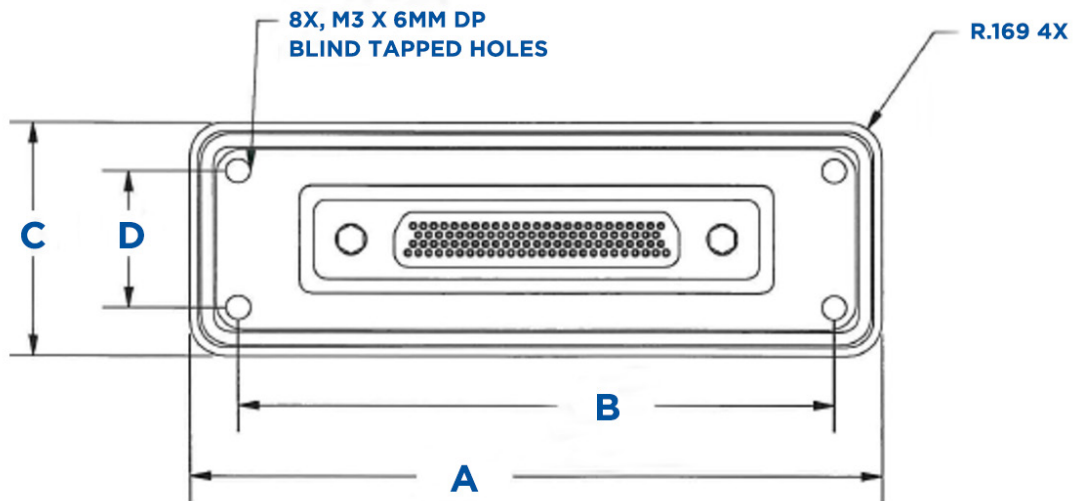
4-6 WEEKS

AAO (After Acceptance of Order)
contact for expedited service

SPECIFICATIONS

Shell material	Stainless-steel or aluminum up to 62 pins; gold-plated brass for 78 and 104 pin counts
Mounting bolt holes	4x M3.0x5 0.335 full thread depth (<i>bolts not included</i>)
Connector material	Electroless nickel plated aluminum shell
Connector feedthrough configuration	Plug-to-Receptacle; both connector sides can be mounted in vacuum environment
Feedthrough connection	Straight-through design; Pin 1 (vacuum) to Socket 1 (atmosphere), standard
Leak rate	$< 1 \times 10^{-9}$ cc He/sec. Contact factory for more options.
Operating temperature	-40°F to 225°F (-40°C to 107°C)
Current rating	3A per contact in air
Voltage resistance	600 VAC

DIMENSIONAL DATA



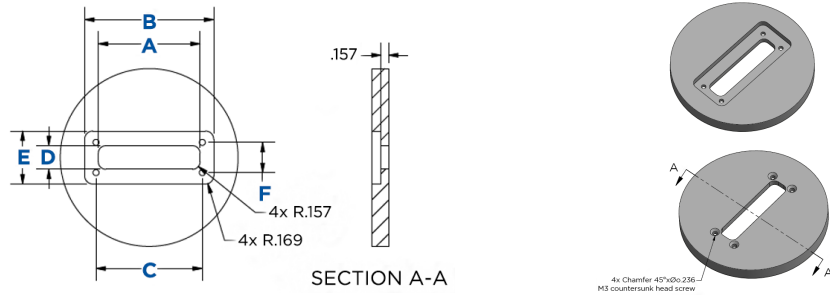
Housing Size (dimensions: inches)	A	B	C	D
1	1.826	1.350	1.106	0.630
2	2.196	1.718	1.139	0.660
3	2.654	2.219	1.066	0.631
4	3.361	2.892	1.135	0.665
5	3.267	2.806	1.276	0.775
6	3.322	2.884	1.260	0.822

Dimensions are in inches; tolerance on angle $\pm 1^\circ$; 2PL ± 0.010

PANEL CUTOUT GUIDELINE

D-sub Panel Cutout (dimensions: inches)	A	B	C	D	E	F
1	1.260	1.866	1.350	0.492	1.146	0.630
2	1.587	2.236	1.718	0.492	1.177	0.660
3	2.126	2.693	2.219	0.492	1.106	0.631
4	2.776	3.402	2.892	0.492	1.173	0.665
5	2.681	3.307	2.806	0.600	1.276	0.775
6	2.776	3.362	2.884	0.661	1.299	0.822

Dimensions are in inches; tolerance on angle $\pm 1^\circ$; 2PL ± 0.010

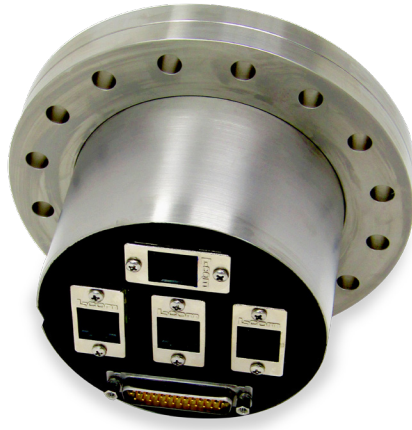
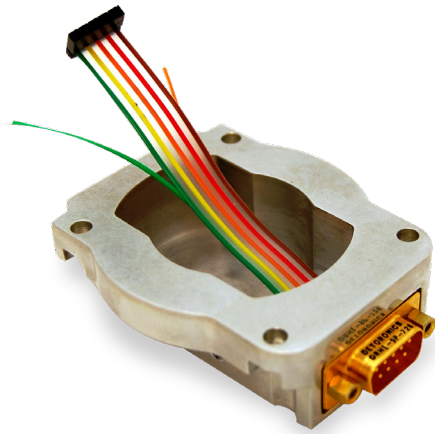


ORDERING INFORMATION

Douglas Electrical Part Number	Pin Count	Denisty	Shell Material	Shell Size
55551/SS	9	SD	Stainless Steel	1
55551/AL	9	SD	Aluminum	1
54665/SS	9	SD	Stainless Steel	2
54665/AL	9	SD	Aluminum	2
54666/SS	15	SD	Stainless Steel	2
54666/AL	15	SD	Aluminum	2
54670/SS	15	HD	Stainless Steel	2
54670/AL	15	HD	Aluminum	2
54667/SS	25	SD	Stainless Steel	3
54667/AL	25	SD	Aluminum	3
54671/SS	26	HD	Stainless Steel	2
54671/AL	26	HD	Aluminum	2
54668/SS	37	SD	Stainless Steel	4
54668/AL	37	SD	Aluminum	4
54672/SS	44	HD	Stainless Steel	3
54672/AL	44	HD	Aluminum	3
54669/SS	50	SD	Stainless Steel	4
54669/AL	50	SD	Aluminum	4
54673/SS	62	HD	Stainless Steel	4
54673/AL	62	HD	Aluminum	4
54674	78	HD	Gold-plated brass	5
54675	104	HD	Gold-plated brass	6

*Other shell sizes may be available with varying pin counts for greater interchangeability. Contact factory.

CONTACT DOUGLAS ELECTRICAL COMPONENTS TO REQUEST A QUOTE FOR YOUR STANDARD OR CUSTOM D-SUB HERMETIC CONNECTOR OR A 3D MODEL.



To Order

You may place an order directly with our Customer Service staff at 973.627.8230.

Technical Questions or Design Assistance

Please call our Sales Engineering Department 973.627.8230.

Standard Terms and Conditions

Domestic shipments: All products are shipped F.O.B. Randolph, NJ. We offer a prompt payment discount of 1% 10 days, Net Cash 30 days to customers who have had their credit approved. Prices and specifications are subject to change without notice.

Foreign shipments: All terms and conditions will be negotiated at time of order placement.

Note to Purchaser

While we believe all statements, representations, and recommendations are correct and reliable, we cannot guarantee accuracy or completeness. It is the user's responsibility to determine and confirm suitability for use. All sales of Douglas Electrical

Components' products are subject to our Standard Terms and Conditions. A copy of our Standard Terms and Conditions may be obtained by calling Customer Service at 973.627.8230. Douglas Electrical will provide Special Certificates of Compliance, Test Reports, and certificates of origin but only if they are requested at the time of order.

Warranty

All products are warranted to be free of defects in materials and workmanship for a period of twelve months from date of shipment. Our liability, unless explicitly changed by us, is strictly limited to the repair or replacement (at our option) of defective parts. Any defective parts must be returned to us to receive credit or replacement. Returned product must be accompanied by an RMA number. RMA numbers may be obtained by calling our Sales Administration Office at 973.627.8230.

Errors

While we believe that all information in this catalog is accurate and correct, we do not take responsibility for typographical errors.

+Viton is a trademark of The Chemours Company

**Douglas Electrical Components, Inc.,
5 Middlebury Blvd., Randolph, NJ 07869**

Ph: +1 (973) 627-8230

E: contactdeco@douglaselectrical.com

W: douglaselectrical.com